



# AUTOMATIC JUICE MACHINES

## OPERATION MANUAL

For Models JX15MC, JX15AC, JX15ACS, JX28MC,  
JX28MCB, JX28AC, JX45AF, JX45AFR

*Prior authorization must be obtained from Grindmaster-Cecilware™  
for all warranty claims.*



---

**GRINDMASTER-CECILWARE™**

4003 Collins Lane

Louisville, KY 40245 USA

Phone: +1.502.425.4776

800.695.4500 (USA & Canada Only)

800.568.5715 (Technical Service Only)

Fax: +1.502.425.4664

Email: [ts@grindmaster.com](mailto:ts@grindmaster.com)

[www.grindmaster.com](http://www.grindmaster.com)

Aug 2010

Part # NS40A Revision B

0810 Form # CW-302-02

© 2010 GRINDMASTER-CECILWARE™

PRINTED IN USA

# Contents

---

|                                   |          |
|-----------------------------------|----------|
| <b>Model Specifications</b> ..... | <b>3</b> |
| <b>General Information</b> .....  | <b>4</b> |
| <b>Setup Procedures</b> .....     | <b>4</b> |
| <b>Warnings</b> .....             | <b>6</b> |
| <b>Operation</b> .....            | <b>7</b> |
| <b>Cleaning</b> .....             | <b>7</b> |

# Model Specifications

---

| Model   | Fruit Output / Min | Feeder Capacity    | Flow Rate / Min                     | Dimensions (H x W x D)                           | Electrical      | Ship Weight         |
|---------|--------------------|--------------------|-------------------------------------|--|-----------------|---------------------|
| JX15MC  | 15                 | 6 Orange           | 25 oz. - 45 oz.<br>(.7 L - 1.3 L)   | 33" x 19.3" x 17.7"<br>(84 cm x 49 cm x 45 cm)   | 120V, .55KW, 9A | 111 lbs.<br>(51 kg) |
| JX15AC  | 15                 | 13 lbs.<br>(6 kg)  | 34 oz. - 66 oz.<br>(1 L - 2 L)      | 36.6" x 19.3" x 17.7"<br>(93 cm x 49 cm x 45 cm) | 120V, .55KW, 9A | 119 lbs.<br>(54 kg) |
| JX15ACS | 15                 | 13 lbs.<br>(6 kg)  | 34 oz. - 66 oz.<br>(1 L - 2 L)      | 36.6" x 19.3" x 19.7"<br>(93 cm x 49 cm x 50 cm) | 120V, .55KW, 9A | 120 lbs.<br>(55 kg) |
| JX28MC  | 28                 | 6 Fruit            | 42 oz. - 84 oz.<br>(1.2 L - 2.5 L)  | 34" x 28.7" x 17"<br>(86 cm x 73 cm x 43 cm)     | 120V, .55KW, 9A | 96 lbs.<br>(44 kg)  |
| JX28MCB | 28                 | 6 Fruit            | 42 oz. - 84 oz.<br>(1.2 L - 2.5 L)  | 34" x 28.7" x 17"<br>(86 cm x 73 cm x 43 cm)     | 120V, .55KW, 9A | 103 lbs.<br>(47 kg) |
| JX28AC  | 28                 | 40 lbs.<br>(18 kg) | 48 oz. - 96 oz.<br>(1.4 L - 2.8 L)  | 39" x 24.4" x 19.7"<br>(99 cm x 62 cm x 50 cm)   | 120V, .55KW, 9A | 109 lbs.<br>(49 kg) |
| JX45AF  | 45                 | 40 lbs.<br>(18 kg) | 57 oz. - 114 oz.<br>(1.7 L - 3.4 L) | 71.3" x 23" x 29.5"<br>(181 cm x 58 cm x 75 cm)  | 120V, .55KW, 9A | 185 lbs.<br>(84 kg) |
| JX45AFR | 45                 | 40 lbs.<br>(18 kg) | 57 oz. - 114 oz.<br>(1.7 L - 3.4 L) | 71.3" x 23" x 29.5"<br>(181 cm x 58 cm x 75 cm)  | 120V, .55KW, 9A | 214 lbs.<br>(97 kg) |

## General Information

---

Please closely follow the instructions indicated in this manual to achieve the maximum performance from your Cecilware JX Automatic Fruit Juice Machine. **Before setting up the machine, please make sure all the people authorized to use the machine have read through this manual.** Please keep this manual in a clean dry place near the machine so it is accessible. All the components of the machine that are in contact with fruit juice should be sanitized in accordance with the requirements of any local health authorities.

## Setup Procedures

---

The machine must be placed on a flat surface away from any heat source. The machine requires ventilation on all four sides to perform properly. Floor standing models should have the lock set on the front casters to prevent unwanted movement. **For Indoor Use Only, using the machine in a location where it is exposed to rain can result in Electrical Shock or damage to the machine.**

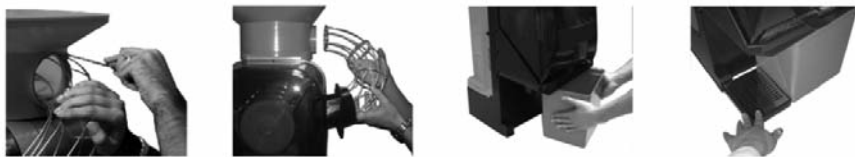
### JX15MC

Unscrew the thumbscrew and connect the feeder tube. Place the peel bucket and the drip tray.



### JX15AC / JX15ACS

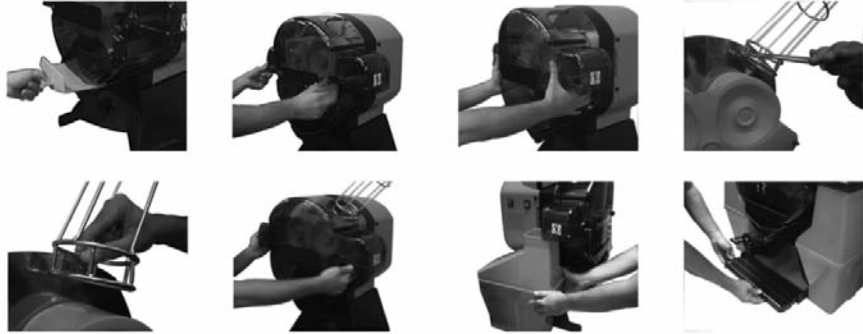
Unscrew the thumbscrew and the screw on the auto feeder, connect the feeder tube. Place the peel bucket and the drip tray.



# Setup Procedures

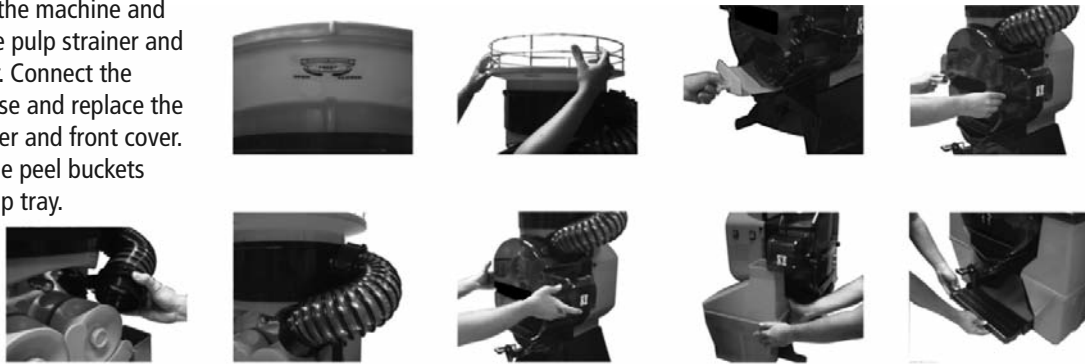
## JX28MC / JX28MCB

Remove the pulp strainer and front cover. Connect the feeder tube and replace the pulp strainer and front cover. Connect the peel buckets and the drip tray.



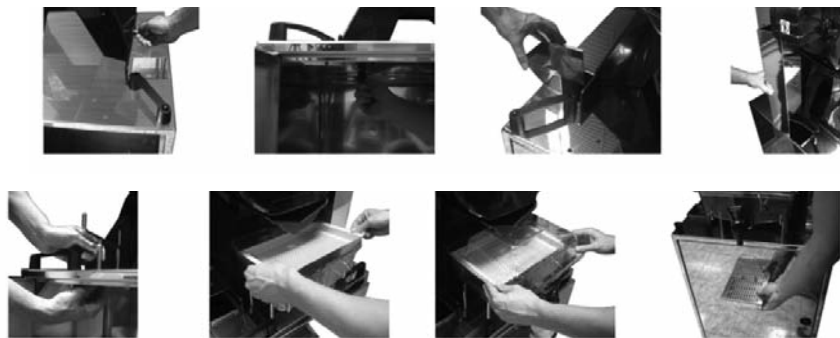
## JX28AC

Connect the auto feeder to the top of the machine and remove the pulp strainer and front cover. Connect the feeding hose and replace the pulp strainer and front cover. Connect the peel buckets and the drip tray.



## JX45AF

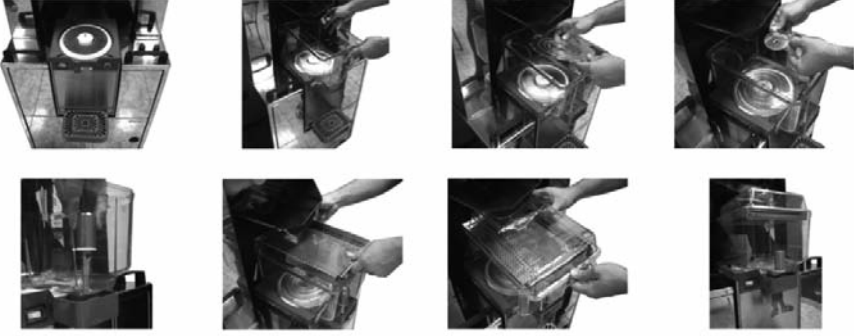
Follow the steps above for the JX28AC. Place the machine on the floor stand, then connect the ramps and down tubes. Connect the dispenser support and place the dispenser. Connect the pulp strainer and the drip tray.



# Setup Procedures


---

**JX45AFR**  
Follow the steps on page 5 for the JX45AF. Connect the caddy as illustrated.

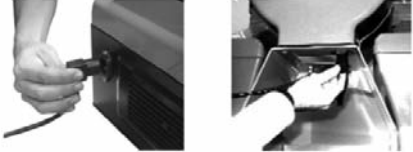


Before connecting the machine, please read the electrical information printed on the machine data plate. Make sure electrical supply matches the machines requirement.

Plug the machine into a grounded electrical outlet.



NEMA 5-15R



## Warnings

---

- Don't operate the machine without verifying that all the parts have been assembled and connected.
  - The machine will not operate without the front cover attached.
- DON'T OPERATE THE MACHINE IF THE DOOR DETECTOR IS MALFUNCTIONING – DISCONNECT THE MACHINE AND CALL TECHNICAL SUPPORT AT 800-568-5715.**
- The machine should be cleaned before using.
- FOR BEST RESULTS, ORANGES WITH A DIAMETER OF 2.36" - 3.2" (60-80 MM) SHOULD BE USED.**
- In compliance with the requirements of local health authorities, the fruit must be washed before using.

# Operation

---

Depending on the model, add fruit to either the feeding tube or the auto feed carousel.

## TO BEGIN PROCESSING FRUIT:

Press the switch on the upper right side of the machine (Position I).

**JX15ACS / JX45AF / JX45AFR:** Once the machine has been started, press the faucet handle to activate the squeezing process.

## TO STOP PROCESSING FRUIT:

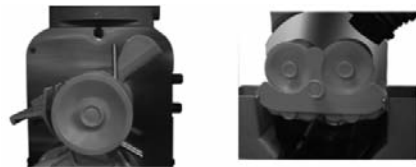
Stop the machine by pressing the 0 red button on the upper right side of the machine.

**JX15ACS / JX45AF / JX45AFR:** Close the faucet and then press the 0 red button on the upper right side of the machine.

# Cleaning

---

Once the juice extraction has completed, stop the machine according to the model type.  
Leave the rods of the squeezer double drum in a vertical position.  
Make sure that the squeezer male parts are horizontal.



Turn To Page 8

# Cleaning

Remove the pulp strainer.

JX15MC / JX15AC / JX15ACS / JX28MC / JX28MCB / JX28AC: Empty the peel bucket.

JX45AF / JX45AFR: Remove the down tubes.



Remove the front cover.

JX15MC / JX15AC / JX15ACS



JX28MC / JX28MCB / JX28AC  
JX45AF / JX45AFR



## JX15MC / JX15AC / JX15ACS

Remove the positioner, pushing it upwards.

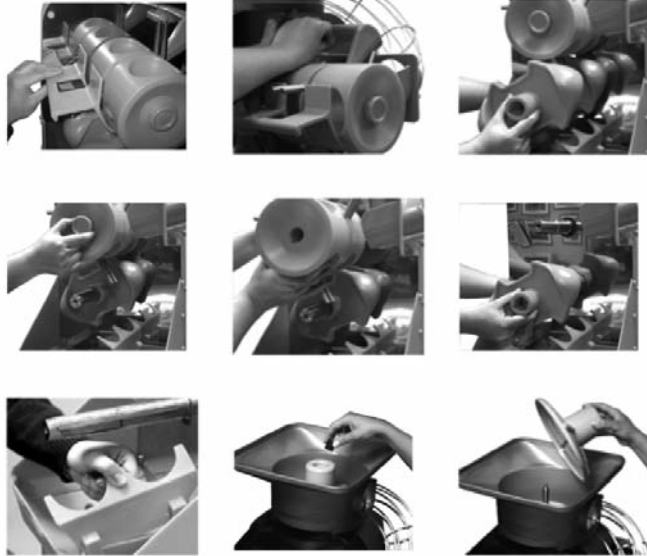
Remove the knife by unscrewing the knife screw (**CAUTION! KNIFE IS SHARP**).

Remove the squeezer male part by unscrewing the screw.

Remove the squeezer drum by unscrewing the screw. Remove the second squeezer male part.

Remove the ejector.

For models with auto feeder: Remove the carousel by unscrewing the screw.



Turn To Page 9



# Cleaning

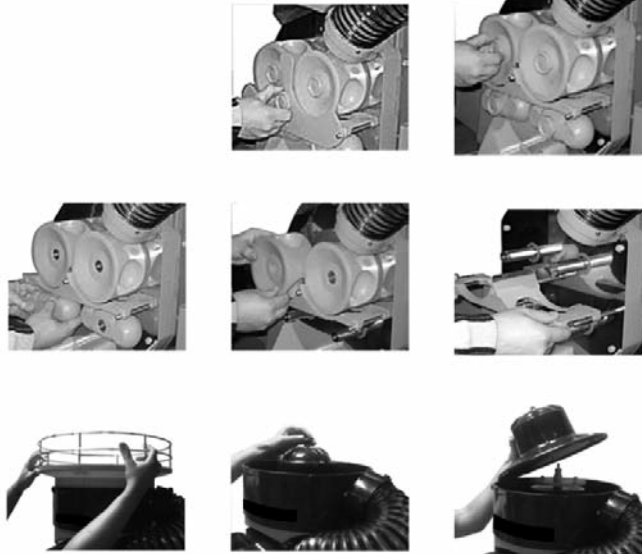
**JX28MC / JX28MCB / JX28AC  
JX45AF / JX45AFR**

Unscrew the five thumbscrews of the squeezing system parts.

Remove the two squeezing drums, the two male parts and the knife by pulling outwards.

**(CAUTION! KNIFE IS SHARP)**

For models with auto feeder: First remove the metal basket, then the carousel by unscrewing the screw towards the right.

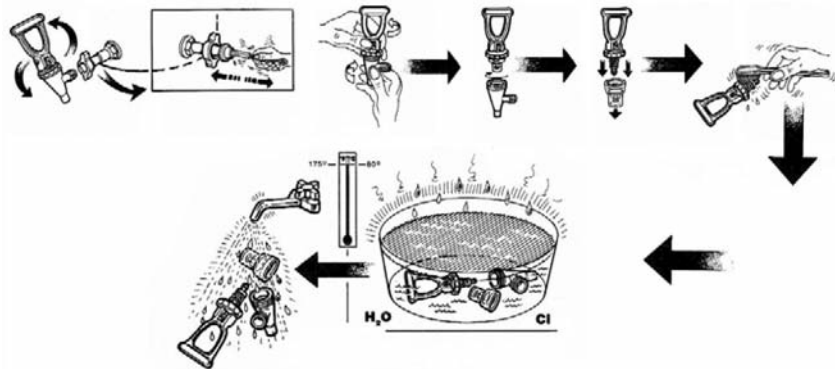


Clean all parts and the body of the machine with water and detergent.  
Do Not Use Abrasive Cleaning Products, they can damage the parts.  
Dry the parts and the interior of the machine.



Assemble all the parts in reverse order. No tools are required to assemble or disassemble the machine. All parts should fit with ease and without undue force.

For machines with faucet,  
**IMPORTANT:** Clean faucet  
according to illustration.





**GRINDMASTER-CECILWARE™**

4003 Collins Lane

Louisville, KY 40245 USA

Phone: +1.502.425.4776

800.695.4500 (USA & Canada Only)

800.568.5715 (Technical Service Only)

Fax: +1.502.425.4664

Email: [ts@grindmaster.com](mailto:ts@grindmaster.com)

[www.grindmaster.com](http://www.grindmaster.com)